



SINGLE STAGE VACUUM BREAKER

PRESSURE REDUCING REGULATOR

4902 SERIES

PREMIER INDUSTRIES

1590 99th Ln NE,
Minneapolis, MN 55449
763-786-4020



MADE IN THE USA
— MINNEAPOLIS, MN —

DESCRIPTION

The Patented Premier 4902 Series regulator supplies the exact amount of gas demanded by an analyzer and automatically shuts off. The Premier 4902 Series regulators are available in aluminum, nickel plated brass, or stainless steel with a 1/4 FNPT inlet port and 1/8 FNPT or hose barb outlet. Models with a C10 inlet connection machined into the body are also available.

The unique high flow capacity of the Premier design will allow analyzers to be tested on a single docking station. The ability to begin the flow of gas at <1" H₂O vacuum, permits reduced testing time.

The Premier 4902 Series pressure reducing regulator's design is remarkably flexible.
Contact **PREMIER INDUSTRIES** for a custom Premier 4902 Series regulator to meet your exact needs.

FEATURES

- Compact size (3" diameter x 2.0" high)
- The unique high flow capability of the Premier 4902 Series design allows multiple analyzers on a single docking station.
- Versions are available with integral C10 connections
- Versions are available with stainless steel bodies and wetted components.
- Very competitive pricing
- Models are available for both corrosive and non-corrosive service
- Machined bar stock bodies eliminate porosity found in castings
- Reduced particle contamination with 40 Micron stainless steel inlet filter
- Integral Relief Valve

4902 SERIES

SINGLE STAGE VACUUM BREAKER PRESSURE REDUCING REGULATOR



SPECIFICATIONS

- **Flow:** 3.0 LPM @ 3" H₂O,
 - up to 8LPM with increased vacuum
- **Maximum inlet pressure :** 3000 PSIG
(with appropriate inlet connection)

MATERIALS OF CONSTRUCTION

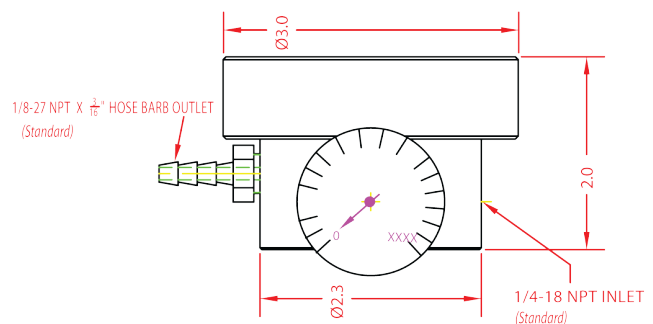
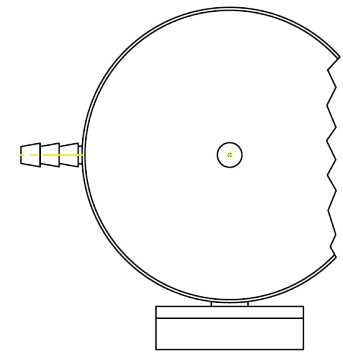
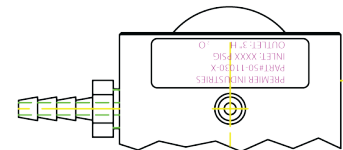
- **BODY:**
 - 6061-T6 Aluminum, Clear Anodize (*Standard*)
 - 303 Stainless Steel
 - 316 Stainless Steel
- **BONNET:** Aluminum, Clear Anodize
- **VALVE SEAT:** Teflon®
- **O-RING SEALS:**
 - Viton® (*Standard*)
 - EPDM
 - numerous other compounds available
- **DIAPHRAGM:**
 - Buna-N (*Standard*)
 - Viton®
- **INLET GAUGE:**
 - Brass Socket / Stainless Steel Case (*Standard*)
 - Stainless Steel Socket / Stainless Steel Case

PORTING

- **INTEGRATED INLET PORTING OPTIONS:**
 - C10 integrated 1/4 FNPT, (*Standard*)
 - 1/4 FNPT
 - 1/8 FNPT
- **OPTIONAL INLET ADAPTER CONNECTIONS:**
 - C-10 (5/8-18 UNF)
 - CGA 180
 - CGA 350
 - CGA 330/660
 - CGA 580/590
 - CGA 600
- **INTEGRATED OUTLET PORTING OPTIONS:**
 - 1/8" FNPT (*Standard*)
- **OPTIONAL OUTLET ADAPTER CONNECTIONS:**
 - 3/16" hose barb (*Standard*)
 - 1/8" hose barb
 - 1/4" hose barb

OPTIONAL ITEMS

- CGA Connections
- Optional hose barbs available in outlet
- Private Label



ORDERING

- **Standard:** part number: 50-11030
- **Non-standard:** part number assigned per requirements

PREMIER INDUSTRIES

1590 99th Ln NE,
Minneapolis, MN 55449
763-786-4020